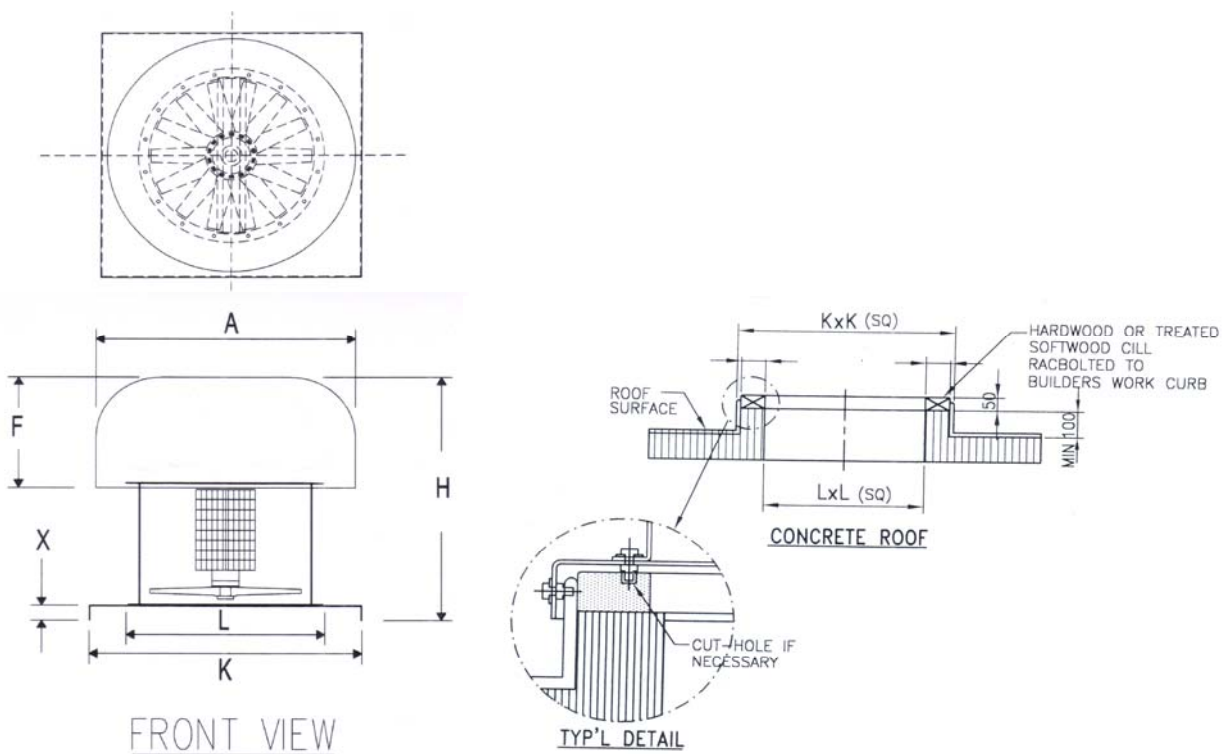




- + Roof cowl and are manufacture with glass fibre reinforced polyester resin.
- + Hot dipped galvanized steel base are used.
- + Rosenberg axial fan are fitted to the unit.
- + Higher air capacity can be achieved.
- + Performance, noise level, technical datas refer to axial fan catalogue.
- + Can be used for supply and exhaust fan.
- + Maintenance is minimal.
- + Longer life span.
- + Easy to install.
- + Damper can be installed when necessary.
- + Special finishes like epoxy coating are available.



Fan Model	A (Diam)	F	L x L (Square)	K x K (Square)	X	H (max)	Base Thickness	Weight (kg) exclude fan
RV 315	600	225	325 x 325	600 x 600	50	625	3	14
RV 400	765	270	410 x 410	680 x 680	50	720	3	17
RV 500	855	320	510 x 510	800 x 800	50	870	3	21
RV 560	960	350	570 x 570	860 x 860	50	900	3	24
RV 630	1080	385	640 x 640	960 x 960	50	1135	3	28
RV 710	1225	450	720 x 720	1020 x 1020	75	1225	3	34
RV 800	1380	495	810 x 810	1110 x 1110	75	1270	3	39
RV 900	1530	540	920 x 920	1260 x 1260	75	1315	3	48
RV 1000	1700	590	1020 x 1020	1360 x 1360	75	1665	3	55
RV 1120	1700	590	1140 x 1140	1500 x 1500	75	1665	3	61
RV 1250	1700	590	1270 x 1270	1660 x 1660	75	1865	3	69

* All dimensions in mm.

* Total height of roof unit "H" = Axial fan casing length + "F" + "X".

* Weight given above are for fibreglass cowling and steel base only.

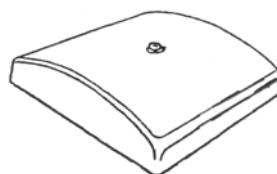
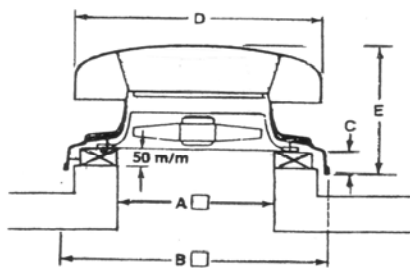
To refer to our Axial fan catalog for fans' casing length.

Note: Square base plate are hot dipped galvanized.



- + Light weight.
- + Roof cowl and base are manufacture with glass fibre reinforced polyester resin.
- + Aluminium mounting brackets are used.
- + Rosenberg propeller fan are fitted to the unit.
- + Performance, noise level, technical datas refer to propeller fan catalogue.
- + Can be used for supply and exhaust fan.
- + Maintenance is minimal.
- + Longer life span.
- + Easy to install.
- + Fan is 100% speed controllable.
- + Low cost.

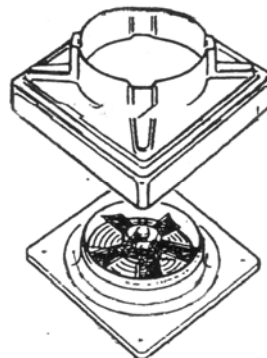
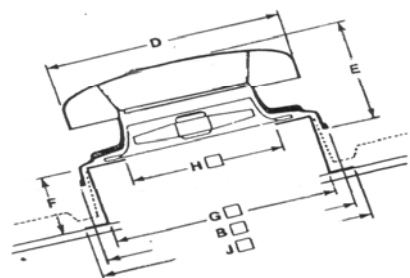
Curb Mounting



Installation Arrangement

Roof cowl
fixed to base internally for improved weatherproof

Purling Mounting



Weather skirt
Deep profile for improved weatherproofing with unique internal fan fixing.

Propeller fan
Bolts internally to weather skirt

Roof extract unit is secured to builders curb by M10 coach screws (by others).

Fan Model	A	B	C	D	E	F	G	H	J	Weight (kg)
LHA 250	280	420	60	520	270	220	400	280	580	6
LHA 300	340	575	60	670	290	220	555	340	735	7
LHA 315	340	575	60	670	290	220	555	340	735	7
LHA 350	400	575	60	670	290	240	555	400	735	7
LHA 400	430	650	75	750	345	240	630	430	810	10
LHA 450	500	650	75	750	345	240	630	500	810	12
LHA 500	560	800	75	900	425	250	780	560	960	16
LHA 560	620	800	75	900	425	250	780	620	960	17
LHA 630	700	900	100	1050	510	260	880	700	1060	22
LHA 710	790	900	100	1050	510	260	880	790	1060	35
LHA 800	890	1050	100	1250	540	270	1030	890	1210	38
LHA 1000	1090	1250	100	1450	650	280	1230	1090	1410	54

* All dimensions in mm.

* Weight given above are for cowl and base only.